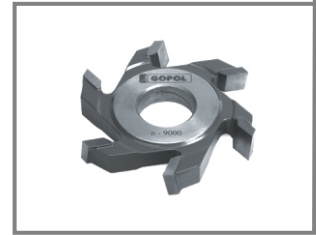


FT-02

Staggered teeth milling cutters for slots



D = mm n = max d = max			80 11000 30	100 10000 40	125 9000 40	140 8000 60	160 6500 60	200 6000 60
B = 10 B = 12	z - 6	HM	0	0	0	0	0	0
		HSS	0	0	0	0	0	0
B = 14 B = 16	z - 8	HM	-	-	-	0	0	0
		HSS	-	-	-	0	0	0
B = 18 B = 20	z - 12	HM	-	-	-	0	0	0
		HSS	-	-	-	0	0	0
B = 25	z - 6	HM	0	0	0	0	0	0
		HSS	0	0	0	0	0	0
	z - 8	HM	0	0	0	0	0	0
		HSS	0	0	0	0	0	0
	z - 12	HM	-	-	-	0	0	0
		HSS	-	-	-	0	0	0
B = 30	z - 6	HM	0	0	0	0	0	0
		HSS	0	0	0	0	0	0
	z - 8	HM	-	-	-	0	0	0
		HSS	-	-	-	0	0	0
	z - 12	HM	-	-	-	-	-	-
		HSS	-	-	-	-	-	-
B = 35	z - 6	HM	-	-	0	0	0	0
		HSS	-	-	0	0	0	0
	z - 8	HM	-	-	-	-	0	0
		HSS	-	-	-	-	0	0
	z - 12	HM	-	-	-	-	-	-
		HSS	-	-	-	-	-	-
B = 40	z - 6	HM	-	-	0	-	0	0
		HSS	-	-	0	-	0	0