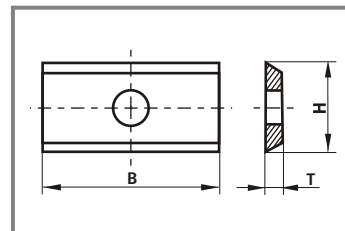


## 8.2 INDEXABLE KNIVES FROM HARD METAL

### Standard indexable knives

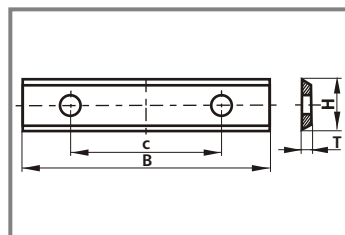
#### PW-01

Dimensions in mm			Hardness	○ ●
B	H	T		
7,5	12	1,5	N	○
7,5	12	1,5	S	○
9,6	12	1,5	N	○
9,6	12	1,5	S	○
10,5	12	1,5	N	○
11,0	12	1,5	S	○
13,0	12	1,5	N	○
15,0	12	1,5	N	○
15,0	12	1,5	S	○
15,7	12	1,5	N	○
17,0	12	1,5	S	○
18,0	12	1,5	S	○
19,0	12	1,5	S	○
20,0	12	1,5	N	●
20,0	12	1,5	S	●
20,0	12	1,5	U	●
24,7	12	1,5	N	○
24,7	12	1,5	S	○



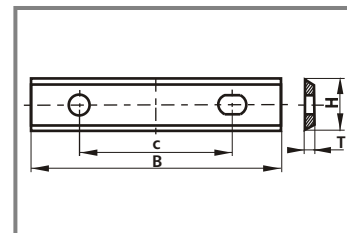
#### PW-02

Dimensions in mm				Hardness	○ ●
B	H	T	C		
24,7	12	1,5	14	N	○
24,7	12	1,5	14	S	○
30	12	1,5	14	N	●
30	12	1,5	14	S	●
30	12	1,5	14	U	●
40	12	1,5	26	N	○
40	12	1,5	26	S	○
50	12	1,5	26	N	●
50	12	1,5	26	S	●
50	12	1,5	26	U	●



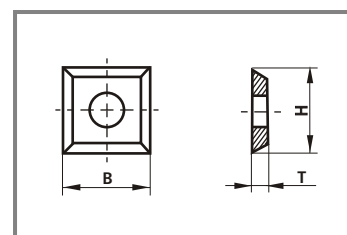
**PW-03**

Dimensions in mm				Hardness	○ ●
B	H	T	C		
80	13	2,2	60	N	○
100	13	2,2	60	N	○
120	13	2,2	60	N	○
130	13	2,2	60	N	○



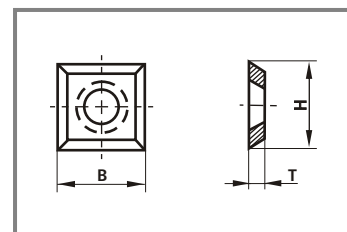
**PW-04**

Dimensions in mm			Hardness	○ ●
B	H	T		
10,5	10,5	1,5	N	○
12	12	1,5	N	○
12	12	1,5	S	○
17	17	2,0	N	○
17	17	2,0	S	○
19	19	2,0	N	○



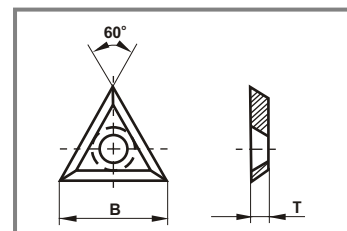
**PW-05**

Dimensions in mm			Hardness	○ ●
B	H	T		
14	14	2,0	N	●
14	14	2,0	S	●
14	14	2,0	N	●



**PW-06**

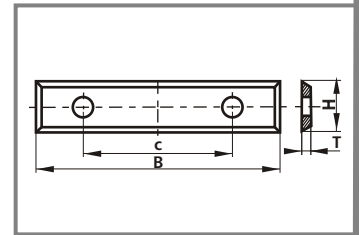
Dimensions in mm			Hardness	○ ●
B	H	T		
9,0	12	1,5	N	○
10,0	12	1,5	N	○
19,2	12	1,5	S	○



INDEXABLE KNIVES

**PW-07**

Dimensions in mm				Hardness	○ ●
B	H	T	C		
29,0	12	1,5	14	N	○
29,5	9	1,5	14	N	○
29,5	9	1,5	14	S	○
49,5	9	1,5	26	N	○
49,5	9	1,5	26	S	○
49,5	12	1,5	26	N	○
49,5	12	1,5	26	S	○
59,5	12	1,5	26	N	○
59,5	12	1,5	26	S	○



**PW-08**

Dimensions in mm					Hardness	○ ●
B	H	T	C			
29,5	12	1,5	14	right	N	○
29,5	12	1,5	14	left	N	○
29,5	12	1,5	14	right	S	○
29,5	12	1,5	14	left	S	○
49,5	12	1,5	26	right	N	○
49,5	12	1,5	26	left	N	○
49,5	12	1,5	26	right	S	○
49,5	12	1,5	26	left	S	○

